

## Light efficiency:

**120 Lumen/Watt**

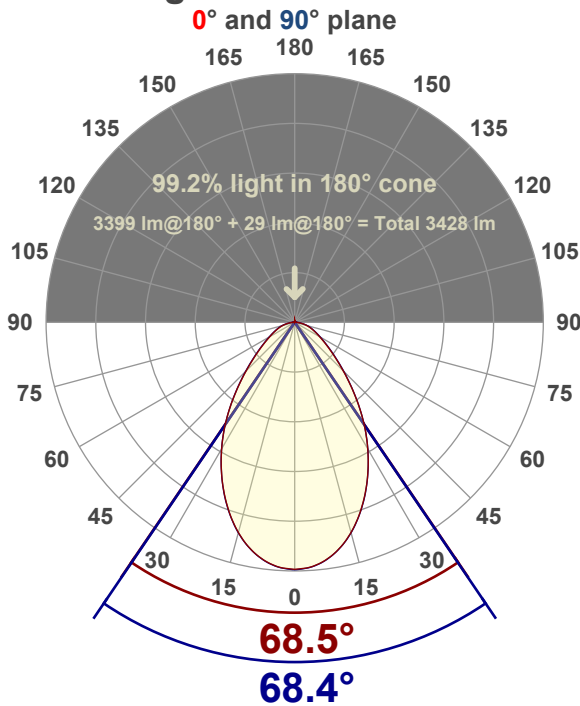
## Color temperature:

**3606 K**

## Light quality:

**CRI:83.9, R<sub>g</sub>:92.3, R<sub>f</sub>:83.6****P: 3 / V: - / F: -****Output: 3399 lm****Peak: 2302 cd****Power: 28.2 W****Voltage: 118 V****Current: 0.241 A****PF: 0.99****THD: 5.99 %**

## Angular Distribution



Product name:

**EDGE-22-WH - 35K 30W**

Test Date:

**6/17/2019**

Beam Angle (50% of the brightness of the centre):

**68.4°**

Field Angle (10% of the brightness of the centre):

**126.7°**

Cut Off Angle (2.5% of the brightness of the centre):

**163.7°**

## Beam Details

\*measured at centre of beam

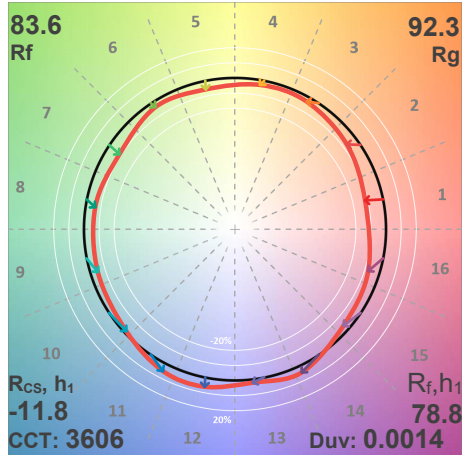
Mounting Height (feet)\(meter)	Lux*	Footcandles*	Beam width (feet) / (meter)
4 ft / 1.2 m	1547 lx	144 fc	5.4 ft / 1.7 m
8 ft / 2.4 m	387 lx	36 fc	10.9 ft / 3.3 m
12 ft / 3.7 m	172 lx	16 fc	16.3 ft / 5 m
16 ft / 4.9 m	97 lx	9 fc	21.7 ft / 6.6 m
20 ft / 6.1 m	62 lx	6 fc	27.2 ft / 8.3 m

Beam center

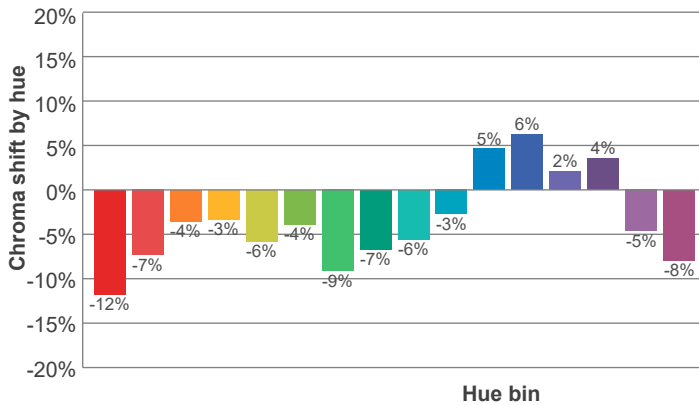
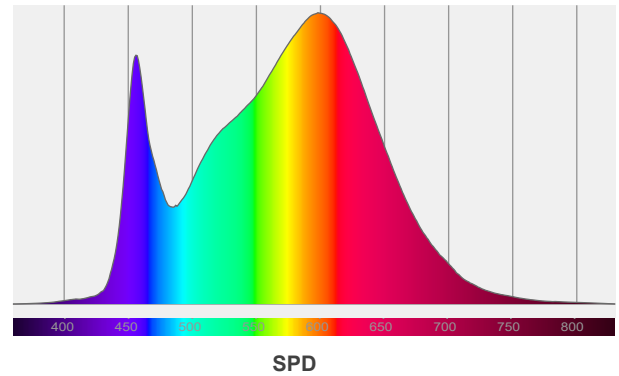
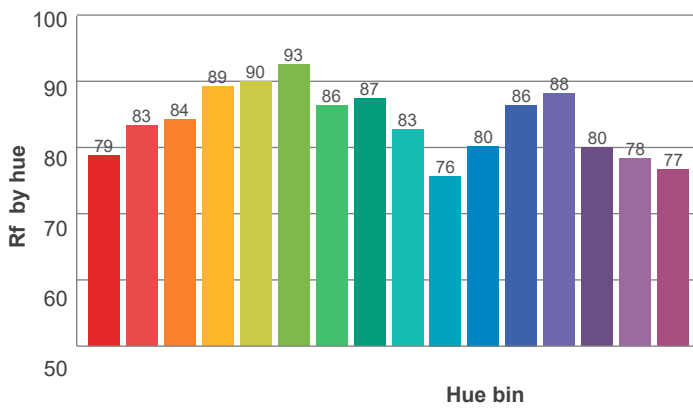
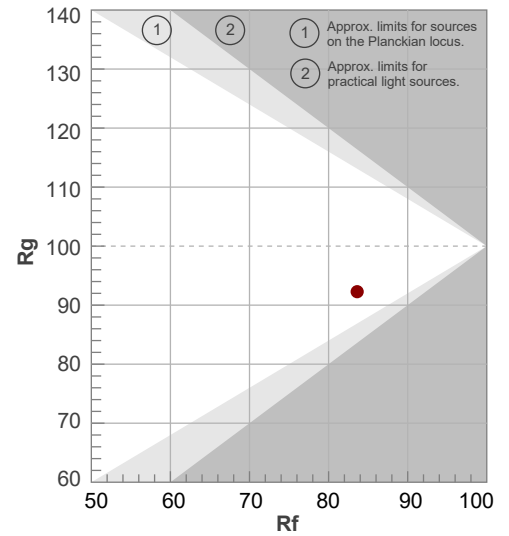
Liteline Corporation – Richmond Hill, Canada – [www.liteline.com](http://www.liteline.com) Liteline Web -Downlights R1.8

ANSI/IES TM-30-18

P: 3 / V: - / F: -



Hue Bin	R <sub>f</sub>	Shifts (%)	
		Chroma	Hue
1	79	-12%	2%
2	83	-7%	5%
3	84	-4%	7%
4	89	-3%	2%
5	90	-6%	1%
6	93	-4%	-1%
7	86	-9%	1%
8	87	-7%	4%
9	83	-6%	10%
10	76	-3%	16%
11	80	5%	13%
12	86	6%	1%
13	88	2%	-8%
14	80	4%	-16%
15	78	-5%	-13%
16	77	-8%	-10%



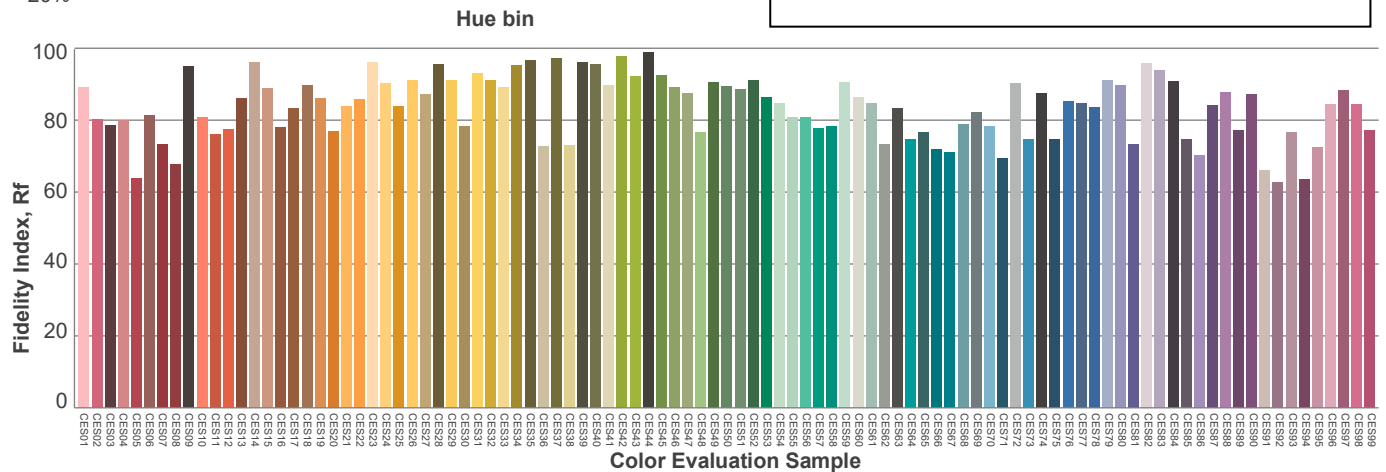
Red: 24.4%, Power=15.4mW

Blue: 14.6%, Power=30.8mW

Green: 28.9%, Power=41.7mW

UVA: 0.4%, Power=0.1mW

Dominant Wavelength: 581nm

1<sup>st</sup> Peak Wavelength: 603nm2<sup>nd</sup> Peak Wavelength: 456nm

## Glare Evaluation According to UGR

Corrected, comprehensive UGR table according to 117-1995, S/H ratio=0.25

p Ceiling		70	70	50	50	30	70	70	50	50	30
p Walls		50	30	50	30	30	50	30	50	30	30
p Floor		20	20	20	20	20	20	20	20	20	20
Room size H = mounting height above eye level  X      Y		Viewing direction at right angles to lamp axis					Viewing direction parallel to lamp axis				
2H	2H	13.4	14.4	13.6	14.7	14.9	13.5	14.4	13.6	14.7	14.9
	3H	14.3	15.3	14.7	15.6	15.8	14.3	15.4	14.7	15.6	15.8
	4H	14.8	15.7	15.2	16.0	16.2	14.8	15.8	15.2	16.1	16.3
	6H	15.2	16.1	15.5	16.3	16.7	15.3	16.1	15.6	16.4	16.8
	8H	15.3	16.2	15.7	16.5	16.9	15.4	16.2	15.7	16.5	16.9
	12H	15.4	16.2	15.8	16.5	17.0	15.5	16.3	15.8	16.6	17.1
4H	2H	13.7	14.7	14.1	15.0	15.2	13.7	14.7	14.1	15.0	15.2
	3H	15.0	15.8	15.3	16.1	16.6	15.0	15.8	15.3	16.1	16.6
	4H	15.5	16.3	15.9	16.7	17.2	15.5	16.3	16.0	16.7	17.2
	6H	16.0	16.8	16.5	17.1	17.5	16.1	16.8	16.6	17.1	17.5
	8H	16.2	16.9	16.7	17.2	17.6	16.3	16.9	16.8	17.3	17.7
	12H	16.3	16.9	16.8	17.3	17.8	16.4	16.9	16.9	17.3	17.8
8H	4H	15.7	16.4	16.3	16.8	17.1	15.8	16.4	16.3	16.8	17.2
	6H	16.4	16.9	16.9	17.4	17.9	16.4	16.9	17.0	17.4	17.9
	8H	16.7	17.1	17.2	17.7	18.3	16.7	17.2	17.3	17.7	18.3
	12H	16.9	17.2	17.5	17.7	18.4	16.9	17.3	17.5	17.8	18.4
12H	4H	15.7	16.3	16.2	16.7	17.2	15.8	16.3	16.3	16.7	17.2
	6H	16.5	16.9	17.0	17.4	18.1	16.5	16.9	17.0	17.5	18.1
	8H	16.8	17.1	17.4	17.6	18.3	16.8	17.2	17.4	17.7	18.3
Variation of the observer position for the luminaire distance S											
S = 1.0H		0.2 / -0.3					0.2 / -0.3				
S = 1.5H		0.6 / -0.6					0.6 / -0.6				
S = 2.0H		1.1 / -0.9					1.1 / -0.9				
Corrected glare indices referring to 3399 lm total luminous flux											

**IESNA TM-15-07**

**Luminaire Classification System  
For Outdoor Luminaires**

**BUG rating**  
**B2 U0 G1**

**UL 90-100°**

0 lm  
0%

**BVH 80-90°**

18 lm  
0.5%

**BH 60-80°**

168 lm  
4.9%

**BM 30-60°**

757.1 lm  
22.1%

**BL 0-30°**

756.4 lm  
22.1%

**UH 100-180°**

0 lm  
0%

**UL 90-100°**

0 lm  
0%

**FVH 80-90°**

18 lm  
0.5%

**FH 60-80°**

168 lm  
4.9%

**FM 30-80°**

757.1 lm  
22.1%

**FL 0-30°**

756.4 lm  
22.1%

